



ELECTRICAL CHARACTERISTICS

PART NO.	INDUCTANCE (μ H)	TOLERANCE (\pm %)	TEST FREQUENCY (MHz)	DC RESISTANCE (Ω) Max.	SRF (Mhz) Min.	IDC (mA) Max.
SQC321618T-R12□-S	0.12	20	25.2	0.112	250	970
SQC321618T-R22□-S	0.22	20	25.2	0.140	250	850
SQC321618T-R47□-S	0.47	20	25.2	0.210	180	700
SQC321618T-1R0□-S	1.0	20	7.96	0.364	100	510
SQC321618T-2R2□-S	2.2	20	7.96	0.533	50	430
SQC321618T-4R7□-S	4.7	10 / 20	7.96	0.845	31	340
SQC321618T-100□-S	10	5 / 10	2.52	1.690	20	230
SQC321618T-220□-S	22	5 / 10	2.52	3.900	14	160
SQC321618T-470□-S	47	5 / 10	2.52	10.40	10	100
SQC321618T-101□-S	100	5 / 10	0.796	15.60	7	80
SQC322520T-1R0□-S	1.0	20	7.96	0.078	100	1000
SQC322520T-2R2□-S	2.2	20	7.96	0.126	64	790
SQC322520T-4R7□-S	4.7	20	7.96	0.195	43	450
SQC322520T-100□-S	10	20	2.52	0.572	26	300
SQC322520T-220□-S	22	10/20	2.52	0.923	19	250
SQC322520T-470□-S	47	10/20	2.52	1.69	15	170
SQC322520T-101□-S	100	5/10	0.796	4.55	10	100
SQC322520T-221□-S	220	5/10	0.796	10.92	6.8	70
SQC322520T-331□-S	330	5/10	0.796	13.00	5.6	60
SQC322520T-391□-S	390	5/10	0.796	22.10	5.0	60
SQC322520T-471□-S	470	5/10	0.796	24.70	5.0	60
SQC322520T-561□-S	560	5/10	0.796	28.60	5.0	60
SQC453226T-1R0□-S	1.0	20	7.96	0.08	100	1080
SQC453226T-1R5□-S	1.5	20	7.96	0.09	85	1000
SQC453226T-2R2□-S	2.2	20	7.96	0.11	60	900
SQC453226T-3R3□-S	3.3	20	7.96	0.13	47	800
SQC453226T-4R7□-S	4.7	10/20	7.96	0.15	35	750
SQC453226T-6R8□-S	6.8	10/20	7.96	0.20	30	720
SQC453226T-100□-S	10	5/10	2.52	0.24	23	650
SQC453226T-150□-S	15	5/10	2.52	0.32	20	570
SQC453226T-220□-S	22	5/10	2.52	0.60	15	420
SQC453226T-330□-S	33	5/10	2.52	1.0	12	310
SQC453226T-470□-S	47	5/10	2.52	1.1	10	280
SQC453226T-680□-S	68	5/10	2.52	1.7	8.4	220
SQC453226T-101□-S	100	5/10	796kHz	2.2	6.8	190
SQC453226T-151□-S	150	5/10	796kHz	3.5	5.5	130
SQC453226T-221□-S	220	5/10	796kHz	4.0	4.5	110
SQC453226T-331□-S	330	5/10	796kHz	6.8	3.6	100
SQC453226T-471□-S	470	5/10	796kHz	8.5	3.0	90
SQC575047T-R12□-S	0.12	20	100kHz	0.0098	450	6000
SQC575047T-R27□-S	0.27	20	100kHz	0.0140	300	5300



ELECTRICAL CHARACTERISTICS

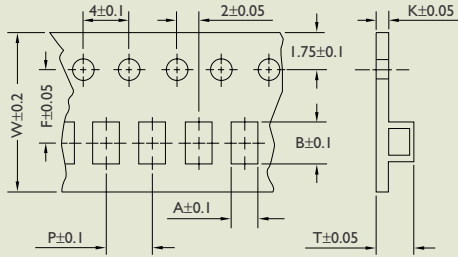
PART NO.	INDUCTANCE (μ H)	TOLERANCE (\pm %)	TEST FREQUENCY (MHz)	DC RESISTANCE (Ω) Max.	SRF (Mhz) Min.	IDC (mA) Max.
SQC575047T-R47□-S	0.47	20	100kHz	0.0182	200	4800
SQC575047T-1R0□-S	1.0	20	100kHz	0.0270	150	4000
SQC575047T-1R5□-S	1.5	20	100kHz	0.0310	110	3700
SQC575047T-2R2□-S	2.2	20	100kHz	0.0410	80	3200
SQC575047T-3R3□-S	3.3	20	100kHz	0.0500	40	2900
SQC575047T-4R7□-S	4.7	20	100kHz	0.0574	30	2700
SQC575047T-6R8□-S	6.8	20	100kHz	0.1040	25	2000
SQC575047T-100□-S	10	10/20	100kHz	0.1300	20	1700
SQC575047T-150□-S	15	10/20	100kHz	0.210	17	1400
SQC575047T-220□-S	22	10/20	100kHz	0.266	15	1200
SQC575047T-330□-S	33	10/20	100kHz	0.448	12	900
SQC575047T-470□-S	47	10/20	100kHz	0.560	10	800
SQC575047T-680□-S	68	10/20	100kHz	0.938	7.6	640
SQC575047T-101□-S	100	10/20	100kHz	1.204	6.5	560
SQC575047T-151□-S	150	10/20	100kHz	2.660	5.0	420
SQC575047T-221□-S	220	10/20	100kHz	3.360	4.0	320
SQC575047T-331□-S	330	10/20	100kHz	6.160	3.1	270
SQC575047T-471□-S	470	10/20	100kHz	7.560	2.4	240
SQC575047T-681□-S	680	10/20	100kHz	11.34	1.9	190
SQC575047T-102□-S	1000	10/20	100kHz	14.42	1.7	150
SQC575047T-222□-S	2200	10/20	100kHz	30.10	1.2	100
SQC575047T-472□-S	4700	10/20	100kHz	61.04	0.8	70
SQC575047T-103□-S	10000	10/20	100kHz	140.0	0.5	50

- Inductance Range 0.12 uH to 10000 uH.
- Current Rating Based on temperature rise not exceeding 20°C and inductance is 90% more than its nominal value.
- Operating Temp. -25°C ~ 85°C
- Soldering Heat 230°C 10 Seconds after 150°C Preheat Cycle for 4 Minutes
- Test Equipment L : HP4285A Precision LCR Meter
SRF : HP4291B RF Impedance Analyzer
DCR : Milliohm Meter
- Inductance Tolerance J = \pm 5% K = \pm 10% M = \pm 20%



TAPE DIMENSIONS

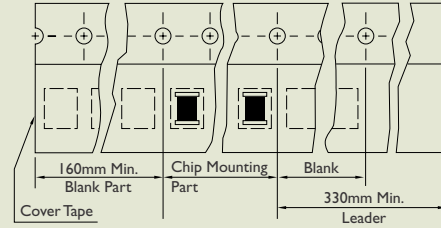
Dimensions : mm



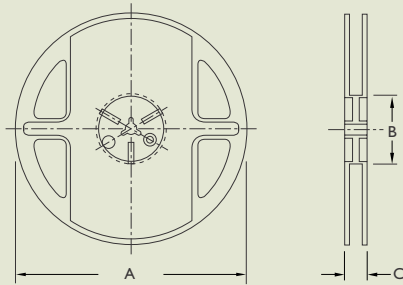
TAPE MATERIAL

Carrier Tape : Polystyrene

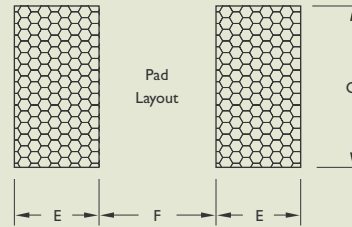
Cover Type : Polyethylene



REEL DIMENSIONS



RECOMMENDED PATTERN



Dimensions : mm

TYPE	TAPE DIMENSIONS							REEL DIMENSIONS			RECOMMENDED PATTERN			QUANTITY /REEL
	A	B	T	W	P	F	K	A	B	C	E	F	G	
SQC321618	1.88	3.53	2.10	8	4	3.5	0.22	178	50	9	1.5	1.0	1.5	2000
SQC322520	2.88	3.65	2.50	8	4	3.5	0.22	178	50	9	1.5	1.0	2.0	2000
SQC453226	3.31	4.88	3.45	12	8	5.5	0.35	178	80	13	2.0	1.2	3.0	500
SQC575047	5.40	6.00	5.50	16	12	7.5	0.40	330	100	17	2.0	2.0	5.0	1000