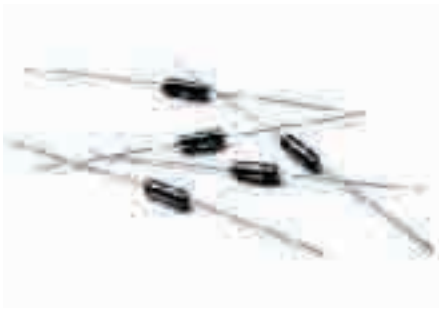
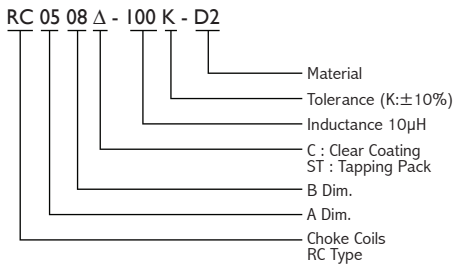


CHOKE COILS
RC TYPE

RC TYPE Series



PRODUCT IDENTIFICATION



- YAGEO the part number of lead-free products will be added “-N” after original one as identification. Ex: RC0508 Δ-1R0K-D2-N
- YAGEO UL tube on RC Series to avoid damage when wave soldering.

FEATURES

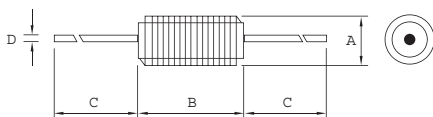
- Low Cost
- Wide Range of Inductance
- High Reliability

TEST INSTRUMENTS

- L.Q : HP 4285 + HP 42851A
- SRF : HP4287A
- RDC : CHEN HWA502BC
- IDC : CHEN HWA CH1061+301A

DIMENSIONS

Dimensions : mm



	RC0508	RC0510	RC0512
A	5 ⁺⁰	5 ⁺⁰	5 ⁺⁰
B	8 ± 0.5	10 ± 0.5	12 ± 0.5
C	25 ⁻⁰	25 ⁻⁰	25 ⁻⁰
D	0.65ø	0.65ø	0.65ø



ELECTRICAL PARAMETERS RC0508/RC0510/RC0512 SERIES

ITEM	INDUCTANCE L (μH)	TEST FREQ. (MHz)	STANDARD SPEC.			
			Q Min.	S.R.F. Min. (MHz)	D.C. RESISTANCE Max. (Ω)	IDC (mA)
RC0508Δ-1R0K-D2	1.0	7.96	30	155	0.186	1730
RC0508Δ-1R2K-D2	1.2	7.96	30	145	0.150	1670
RC0508Δ-1R5K-D2	1.5	7.96	30	130	0.160	1130
RC0508Δ-1R8K-D2	1.8	7.96	30	115	0.17	1070
RC0508Δ-2R2K-D2	2.2	7.96	30	105	0.19	1030
RC0508Δ-2R7K-D2	2.7	7.96	30	95	0.21	960
RC0508Δ-3R3K-D2	3.3	7.96	30	85	0.23	900
RC0508Δ-3R9K-D2	3.9	7.96	30	80	0.25	860
RC0508Δ-4R7K-D2	4.7	7.96	30	70	0.50	550
RC0508Δ-5R6K-D2	5.6	7.96	30	65	0.55	530
RC0508Δ-6R8K-D2	6.8	7.96	30	60	0.61	550
RC0508Δ-8R2K-D2	8.2	7.96	30	55	0.88	480
RC0508Δ-100K-D2	10	2.52	30	50	0.75	460
RC0508Δ-120K-D2	12	2.52	30	48	0.82	460
RC0510Δ-150K-D2	15	2.52	30	45	0.83	430
RC0510Δ-180K-D2	18	2.52	30	41	0.94	410
RC0510Δ-220K-D2	22	2.52	30	35	1.20	390
RC0510Δ-270K-D2	27	2.52	30	30	1.20	370
RC0510Δ-330K-D2	33	2.52	30	32	1.30	370
RC0510Δ-390K-D2	39	2.52	30	30	1.45	355
RC0512Δ-470K-D2	47	2.52	30	27	1.64	355
RC0512Δ-560K-D2	56	2.52	30	24	1.75	320
RC0512Δ-680K-D2	68	2.52	30	22	2.50	310
RC0512Δ-820K-D2	82	2.52	30	20	3.50	290

* Customers' specifications are welcome.

CHOKE COILS
RC TYPE

RC TYPE Series



TEST INSTRUMENTS

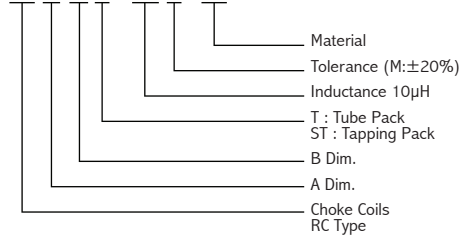
L : HP 4285 + 42851A

IDC : CHEN HWA CHI061H301A

- YAGEO the part number of lead-free products will be added "-N" after original one as identification. Ex: RC0513 Δ-5R6M-D2-N
- YAGEO uses UL tube on RC Series to avoid damage when wave soldering.

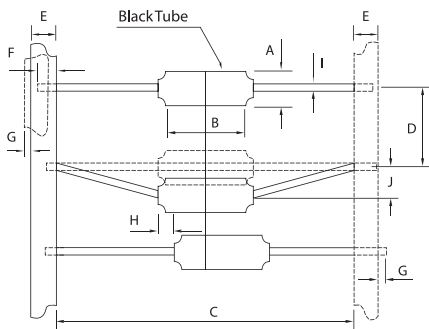
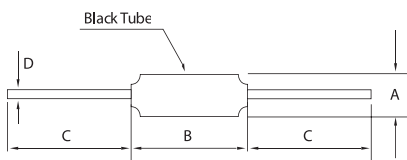
PRODUCT IDENTIFICATION

RC 05 13 Δ - 100 M - D2



DIMENSIONS

Dimensions : mm



	RC0513T	RC0519T	RC0621T	RC0628T
A	5 ⁺⁰	5 ⁺⁰	6 ⁺⁰	6 ⁺⁰
B	13 ⁺⁰	19 ⁺⁰	21 ⁺⁰	28 ⁺⁰
C	30 ⁰	30 ⁰	30 ⁰	30 ⁰
D	0.65 ϕ	0.65 ϕ	0.8 ϕ	0.8 ϕ

	RC0513ST	RC0519ST	RC0621ST	RC0628ST
A	5 ⁺⁰	5 ⁺⁰	6 ⁺⁰	6 ⁺⁰
B	13 ⁺⁰	19 ⁺⁰	18 ~ 21	23 ~ 27
C	52.4 ± 1.5	73 ± 1.5	76 ~ 80	76 ~ 80
D	5 ± 0.5	10 ± 0.5	10 ± 0.5	10 ± 0.5
E	6 ± 1	6 ± 1	6 ± 1	6 ± 1
F	3.2 ⁰	3.2 ⁰	4.8 ⁰	4.8 ⁰
G	0.8 ⁺⁰	0.8 ⁺⁰	0.8 ⁺⁰	0.8 ⁺⁰
H	2.5 ⁺⁰	2.5 ⁺⁰	2.5 ⁺⁰	2.5 ⁺⁰
I	0.65 ϕ	0.65 ϕ	0.8 ϕ	0.8 ϕ
J	1.5 ⁺⁰	1.5 ⁺⁰	1.5 ⁺⁰	1.5 ⁺⁰



ELECTRICAL PARAMETERS RC0513/RC0519/RC0621/RC0628 SERIES

ITEM	INDUCTANCE L (μH)	TEST FREQ. (MHz)	IDC (A)
RC0513 Δ -5R6M-D2	5.6	7.96	0.80
RC0513 Δ -6R8M-D2	6.8	7.96	0.80
RC0513 Δ -7R5M-D2	7.5	7.96	0.45
RC0513 Δ -8R2M-D2	8.2	7.96	0.43
RC0513 Δ -100M-D2	10	2.52	0.40
RC0513 Δ -120M-D2	12	2.52	0.38
RC0513 Δ -150M-D2	15	2.52	0.36
RC0513 Δ -180M-D2	18	2.52	0.36
RC0513 Δ -220M-D2	22	2.52	0.33
RC0513 Δ -270M-D2	27	2.52	0.31
RC0519 Δ -5R6M-D2	5.6	7.96	1.30
RC0519 Δ -6R8M-D2	6.8	7.96	1.30
RC0519 Δ -7R5M-D2	7.5	7.96	1.30
RC0519 Δ -8R2M-D2	8.2	7.96	1.30
RC0519 Δ -100M-D2	10	2.52	1.30
RC0519 Δ -120M-D2	12	2.52	1.30
RC0519 Δ -150M-D2	15	2.52	1.00
RC0519 Δ -180M-D2	18	2.52	1.00
RC0519 Δ -220M-D2	22	2.52	0.90
RC0519 Δ -270M-D2	27	2.52	0.50
RC0519 Δ -330M-D2	33	2.52	0.50
RC0519 Δ -390M-D2	39	2.52	0.30
RC0519 Δ -470M-D2	47	2.52	0.30
RC0621 Δ -3R3M-K	3.3	7.96	3.00
RC0621 Δ -5R6M-K	5.6	7.96	3.00
RC0621 Δ -6R8M-K	6.8	7.96	3.00
RC0621 Δ -7R5M-K	7.5	7.96	3.00
RC0621 Δ -8R2M-K	8.2	7.96	3.00
RC0621 Δ -100M-K	10	2.52	3.00
RC0621 Δ -120M-K	12	2.52	2.00
RC0621 Δ -150M-K	15	2.52	2.00
RC0621 Δ -180M-K	18	2.52	1.60
RC0621 Δ -220M-K	22	2.52	1.60
RC0621 Δ -270M-K	27	2.52	0.80
RC0621 Δ -330M-K	33	2.52	0.80
RC0621 Δ -390M-K	39	2.52	0.80
RC0621 Δ -470M-K	47	2.52	0.70
RC0628 Δ -5R6M-K	5.6	7.96	5.00
RC0628 Δ -6R8M-K	6.8	7.96	5.00
RC0628 Δ -7R5M-K	7.5	7.96	5.00
RC0628 Δ -8R2M-K	8.2	7.96	5.00
RC0628 Δ -100M-K	10	2.52	4.00
RC0628 Δ -120M-K	12	2.52	4.00
RC0628 Δ -150M-K	15	2.52	4.00
RC0628 Δ -180M-K	18	2.52	3.00
RC0628 Δ -220M-K	22	2.52	3.00
RC0628 Δ -270M-K	27	2.52	2.00
RC0628 Δ -330M-K	33	2.52	2.00
RC0628 Δ -390M-K	39	2.52	1.20
RC0628 Δ -470M-K	47	2.52	1.20

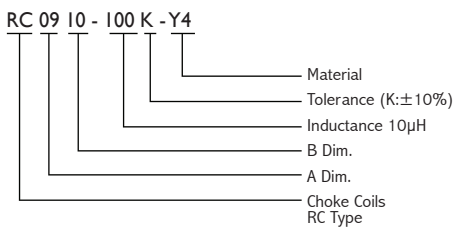
* Customers' specifications are welcome.

CHOKE COILS
RC TYPE

RC 0910 Series

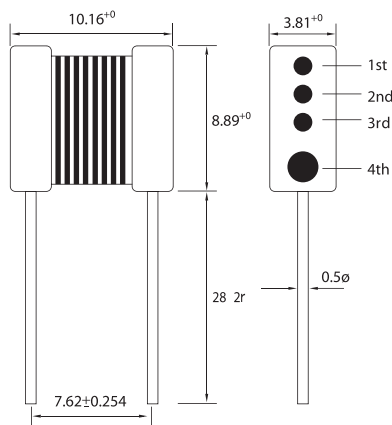


PRODUCT IDENTIFICATION



OUTER DIMENSION

Dimensions : mm



TEST INSTRUMENTS

L.Q. : HP 4285 + HP 42851A

RDC : CHEN HWA502BC

IDC : CHEN HWA CHI061+301A

SPECIFICATIONS

Dimensions : mm

STYLE	READIAL LEAD
Temperature Rise	20°C
Ambient Temperature	80°C
Temperature Range	-20°C to 100°C
Terminal Tensile Strength	2.5Kg Min.
Terminal Bending Strength	0.5Kg

■ YAGEO the part number of lead-free products will be added "-N" after original one as identification. Ex: RC0910-1R0K-Y4-N.



ELECTRICAL PARAMETERS

ITEM	INDUCTANCE L (μH)	TEST FREQ. (MHz)	STANDARD SPEC.		
			Q Min.	D.C. RESISTNACE Max. (Ω)	IDC (A)
RC0910-1R0K-Y4	1.0	7.96	90	0.015	7.00
RC0910-1R2K-Y4	1.2	7.96	39	0.012	6.00
RC0910-1R5K-Y4	1.5	7.96	33	0.014	5.00
RC0910-1R8K-Y4	1.8	7.96	37	0.020	4.80
RC0910-2R2K-Y4	2.2	7.96	38	0.025	4.40
RC0910-2R5K-Y4	2.5	7.96	85	0.030	4.10
RC0910-2R7K-Y4	2.7	7.96	43	0.028	4.00
RC0910-3R3K-Y4	3.3	7.96	35	0.036	3.70
RC0910-3R9K-Y4	3.9	7.96	37	0.050	3.40
RC0910-4R7K-Y4	4.7	7.96	37	0.053	3.20
RC0910-5R0K-Y4	5.0	7.96	90	0.080	2.90
RC0910-5R6K-Y4	5.6	7.96	35	0.092	2.80
RC0910-6R8K-Y4	6.8	7.96	29	0.113	2.60
RC0910-7R5K-Y4	7.5	7.96	95	0.110	2.50
RC0910-8R2K-Y4	8.2	7.96	32	0.116	2.20
RC0910-100K-Y4	10	7.96	90	0.190	2.10
RC0910-120K-Y4	12	2.52	55	0.140	2.00
RC0910-150K-Y4	15	2.52	51	0.158	1.60
RC0910-180K-Y4	18	2.52	46	0.180	1.50
RC0910-220K-Y4	22	2.52	51	0.230	1.40
RC0910-250K-Y4	25	2.52	80	0.500	1.30
RC0910-270K-Y4	27	2.52	52	0.265	1.30
RC0910-330K-Y4	33	2.52	47	0.346	1.20
RC0910-390K-Y4	39	2.52	46	0.371	1.10
RC0910-470K-Y4	47	2.52	49	0.502	1.03
RC0910-500K-Y4	50	2.52	70	1.100	1.00
RC0910-560K-Y4	56	2.52	45	0.687	0.95
RC0910-680K-Y4	68	2.52	46	0.888	0.90
RC0910-750K-Y4	75	2.52	45	1.200	0.86
RC0910-820K-Y4	82	2.52	53	1.198	0.85
RC0910-101K-Y4	100	0.796	85	1.500	0.70
RC0910-121K-Y4	120	0.796	77	1.725	0.65
RC0910-151K-Y4	150	0.796	79	1.855	0.60
RC0910-181K-Y4	180	0.796	76	2.070	0.58
RC0910-221K-Y4	220	0.796	63	2.185	0.49
RC0910-251K-Y4	250	0.796	55	2.700	0.49
RC0910-271K-Y4	270	0.796	70	2.530	0.45
RC0910-331K-Y4	330	0.796	54	3.335	0.41
RC0910-391K-Y4	390	0.796	60	3.450	0.39
RC0910-471K-Y4	470	0.796	76	5.290	0.35
RC0910-501K-Y4	500	0.796	35	3.300	0.34
RC0910-561K-Y4	560	0.796	68	5.405	0.32
RC0910-681K-Y4	680	0.796	64	5.930	0.29
RC0910-751K-Y4	750	0.796	30	4.200	0.28
RC0910-821K-Y4	820	0.796	60	6.325	0.27
RC0910-102K-Y4	1000	0.252	70	8.600	0.21
RC0910-122K-Y4	1200	0.252	70	10.005	0.21
RC0910-152K-Y4	1500	0.252	72	14.260	0.19
RC0910-182K-Y4	1800	0.252	72	15.765	0.17
RC0910-222K-Y4	2200	0.252	72	17.595	0.15
RC0910-252K-Y4	2500	0.252	75	18.000	0.14
RC0910-272K-Y4	2700	0.252	72	19.320	0.14
RC0910-332K-Y4	3300	0.252	70	21.735	0.13
RC0910-392K-Y4	3900	0.252	70	26.000	0.12
RC0910-472K-Y4	4700	0.252	63	29.900	0.11
RC0910-502K-Y4	5000	0.252	45	31.000	0.10
RC0910-752K-Y4	7500	0.252	25	50.000	0.08
RC0910-103K-Y4	10000	0.0796	25	70.000	0.07

* Customers' specifications are welcome.